

PYXIS
AVIATION
GROUP
navigating the deal



SPECIFICATIONS - As of Sep 2024

GULFSTREAM

G500 SN 72039



DELIVERY YEAR

2019



TOTAL TIME

328



LANDINGS

142

SPECIFICATION 2019 GULFSTREAM G500



Airframe	
Serial Number	72039
Delivery Year	2019
Registration	P4-PLG
Program	-
Total Airframe Hours	328
Landings	142
Location	-

Engines		
PW814GA		
	ENGINE 1	ENGINE 2
Serial Number	PCE-GA0146	PCE-GA0145
TSN	328	328
CSN	142	142
Engine Program	-	

APU	
HGT400[G]	
SN	P-159
TSN	565
CSN	-
APU Program	-

Avionics
ADF: Yes
AHRS: Dual
Autopilot: Dual AFCS
Communication Radios: Triple
CVR: Yes
DME: Dual
EFIS: 4-tube (flat-panel)
FDR: Yes
Flight Director: Dual AFCS
FMS: Triple
GPS: Dual
Hi Frequency: Dual
IRS: Triple Honeywell LASEREF VI MIRU
Navigation Radios: Dual
Radar Altimeter: Dual
SATCOM: Inmarsat; Iridium
TAWS: Dual EGPWS w/predictive windshear
TCAS: TCAS-II w/change 7.1
Transponder: Dual Mode S
Weather Radar: 3D (color)

Features
EVS-III (Enhanced Vision System)
HUD (Heads-Up Display)
FANS 1/A+ (Future Air Navigation System)
CPDLC (Controller Pilot Data-Link Communication)
SVS (Synthetic Vision System)
High-Speed Wifi

SPECIFICATIONS ARE PROVIDED FOR INFORMATIONAL PURPOSES ONLY AND DO NOT CONSTITUTE REPRESENTATIONS OR WARRANTIES. THESE SPECIFICATIONS ARE SUBJECT TO BUYER'S INDEPENDENT VERIFICATION UPON INSPECTION. THE AIRCRAFT IS SUBJECT TO PRIOR SALE, LEASE AND/OR REMOVAL FROM THE MARKET WITHOUT PRIOR NOTICE

SPECIFICATION 2019 GULFSTREAM G500

Additional Equipment

Cockpit	ADS-C, WAAS, RAAS
Crew Accessories	Cockpit printer
Equipment	Passenger oxygen system, therapeutic oxygen system, HD external camera system, 28-volt DC ground service bus, 60 Hz power system, aircraft security system

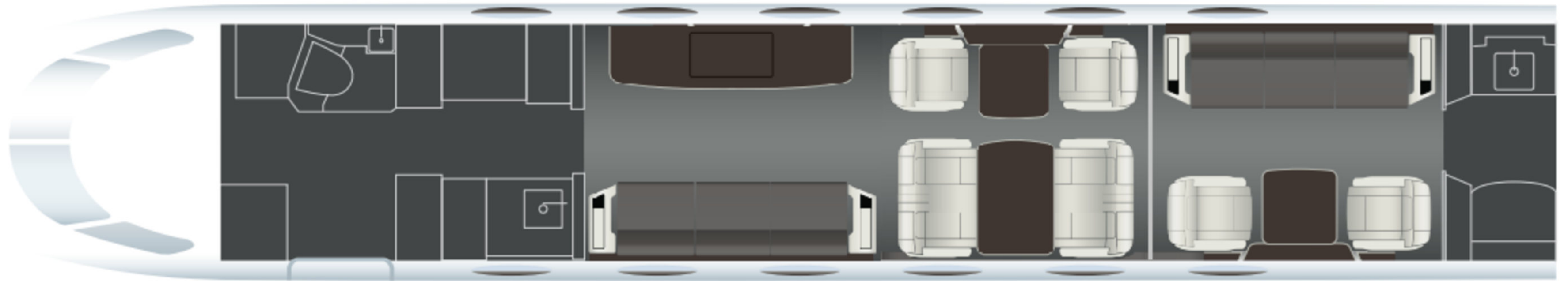
Interior

Passenger Capacity: 14 Passenger Seats (Certified for 13)
Upholstery: Beige and Light Tan
Pillows: Dark blue with gold accents
Leather seat: Quilted Tan Leather
Wood paneling: Glossy Dark Brown
Walls/Ceiling: Cream / Off-white
Carpet: Light beige with a subtle pattern

Exterior

Body: Glossy white
Accents: Dark blue and silver stripes

FLOOR PLAN 2019 GULFSTREAM G500



PYXIS
AVIATION
GROUP
navigating the deal



PYXIS
AVIATION
GROUP
navigating the deal



PYXIS
AVIATION
GROUP
navigating the deal





MEGADOOR
ASSA ABLOY

PYXIS
AVIATION
GROUP
navigating the deal





PYXIS
AVIATION
GROUP
navigating the deal





FOR TAKE OFF, CLIMB, AND LANDING:

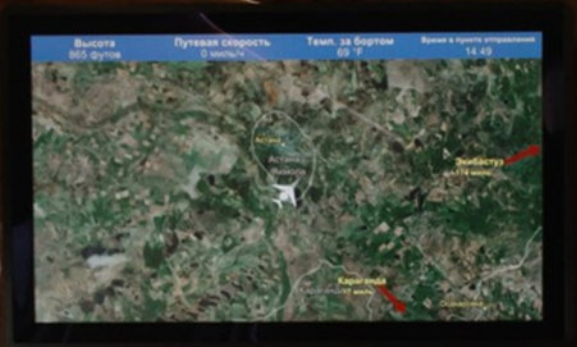
- REAR SEAT BACK
- SLIDE SEAT FULLY AWAY FROM TABLE
- SLIDE SEAT FORWARD WINDOW CENTER, AGAINST WALL OR AIRCRAFT
- PLACE TABLE AGAINST WALL IN THE DOWN POSITION
- LIFT HEADREST TO HEAD POSITION
- HOLD TABLE LEADS AND PLACE TABLE IN FULL DOWN POSITION
- FASTEN SEAT BELT AND SHOULDER HARNESS

LIFE VEST UNDER BOTTOM SEAT CUSHION IF NEEDED

FOR ALL OTHERS FOLLOW THIS SEQUENCE:

- BRIDGE SEAT BELT AND SHOULDER HARNESS
- HOLD SEAT FORWARD AND UPWARD
- PLACE SEAT AGAINST WALL
- PLACE SEAT BELT AND SHOULDER HARNESS

EXIT





PYXIS
AVIATION
GROUP
navigating the deal



LATCH WHEN NOT IN USE

NO STORAGE

PYXIS
AVIATION
GROUP
navigating the deal



ON/OFF CHIME POWER
START STOP/CLR LOCK

00:00
M S

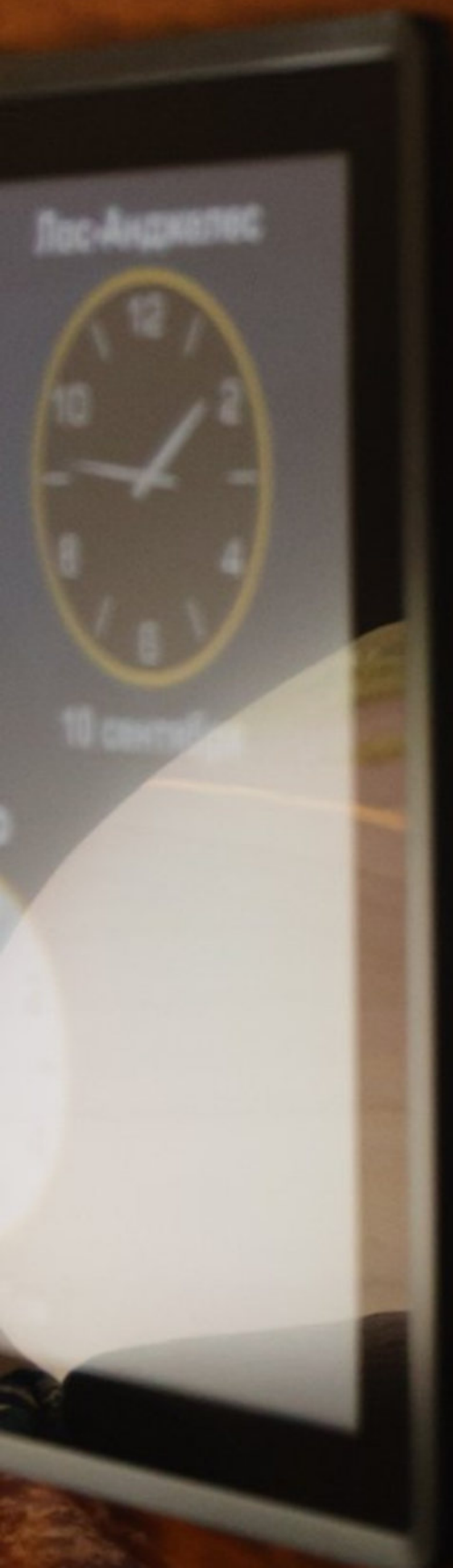
1 2 3
4 5 6
7 8 9
0:30 0 1:00



REMOVE AND STOW SINK COVER FOR
TAXI, TAKEOFF, AND LANDING



PYXIS
AVIATION
GROUP
navigating the deal





PYXIS
AVIATION
GROUP
navigating the deal



PYXIS
AVIATION
GROUP
navigating the deal



PYXIS
AVIATION
GROUP
navigating the deal









Contact

Shiloh Saatori
Executive Vice President

Phone: +43 676 83211 717
E-mail: s.saatori@pyxis.aero

www.pyxis.aero

Notes

Specifications, descriptions, terms, and pricing are provided as introductory information only. Interested parties should rely upon their own inspections and examinations of aircraft and their records. This introductory information is subject to changes and/or correction and does not constitute representations or warranties by Pyxis Aviation Group or its clients. This material does not represent a binding offering, and aircraft are subject to prior sale and/or withdrawal from the market at any time.